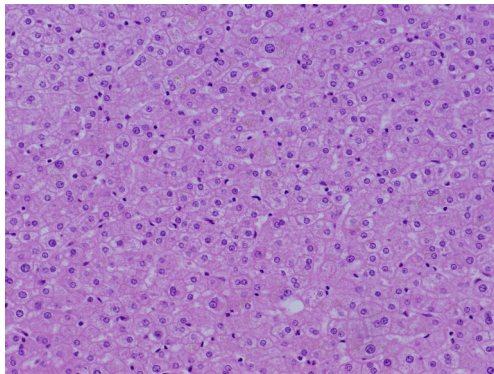
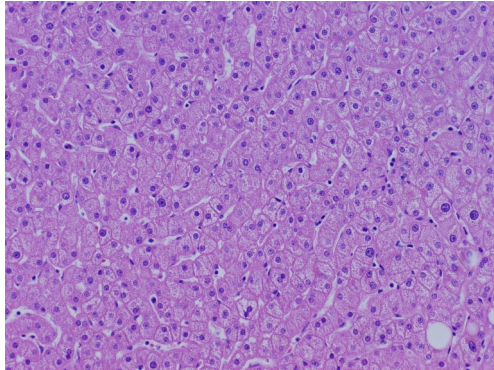


Laennec Hepatic Neoplasia Standards

Architecture grades

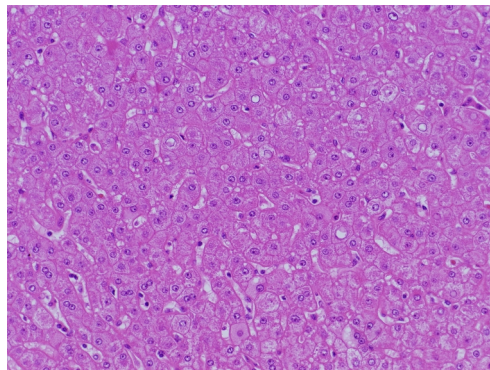
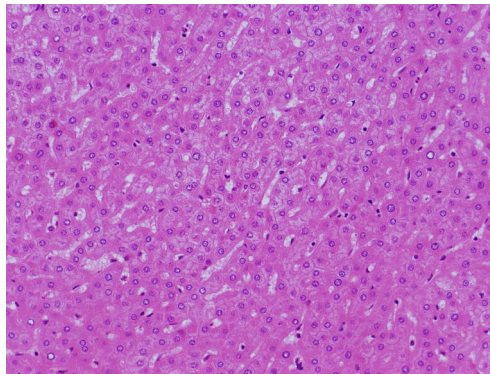
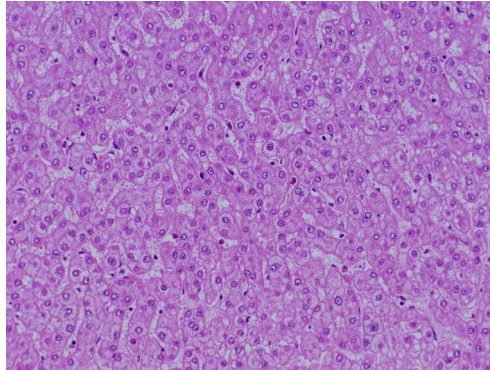
Arch1

Plates 1 cell wide,
regular and well-defined



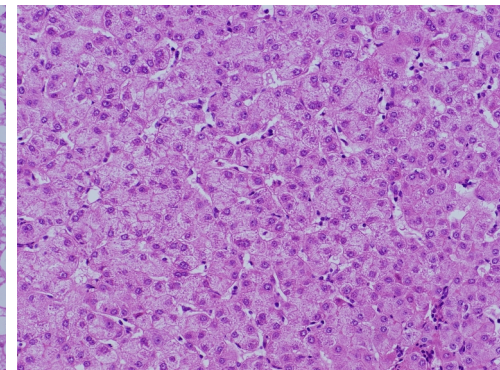
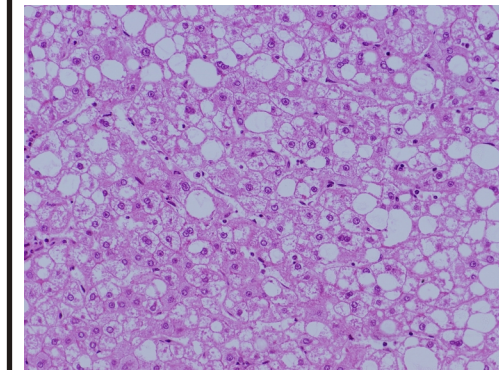
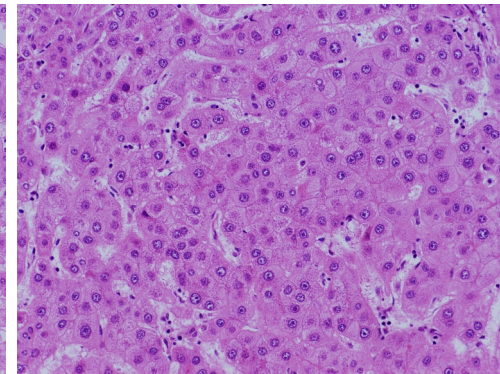
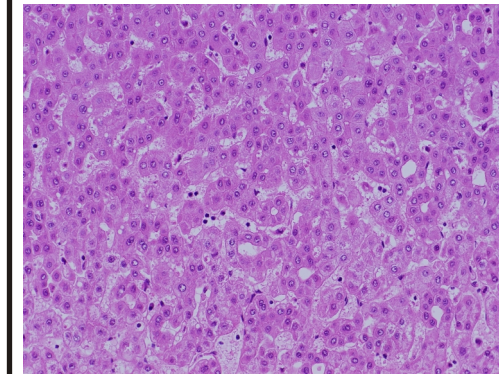
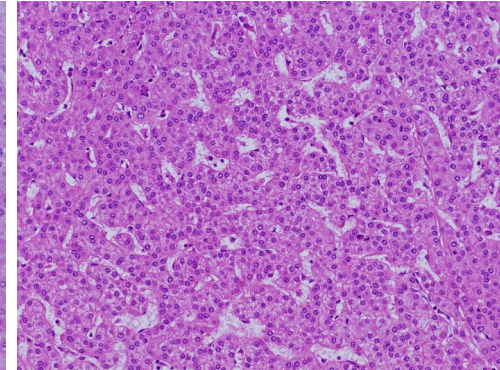
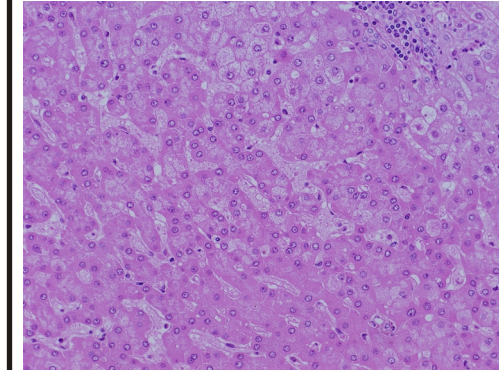
Arch2

Plates 2 cells wide,
mostly well-defined with
minimal atypical forms



Arch3

Plates up to 3 cells wide or with atypical forms
(irregular, pseudoglandular)



200 μ m

All photographs taken
with 20x objective

Laennec Hepatic Neoplasia Standards

Architecture grades

Arch4

Plates 4-10 cells wide
(mid-trabecular)

Arch5

Plates >10 cells wide
(macro-trabecular) or solid

